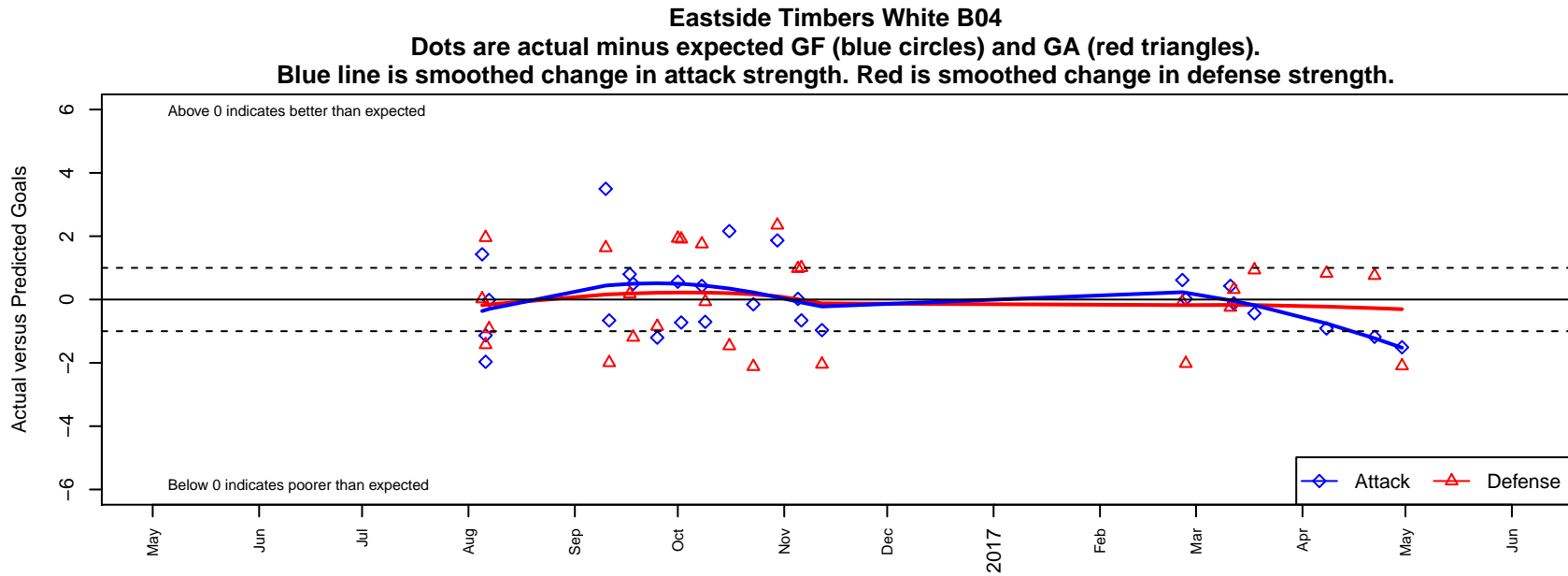


## Eastside Timbers White B04

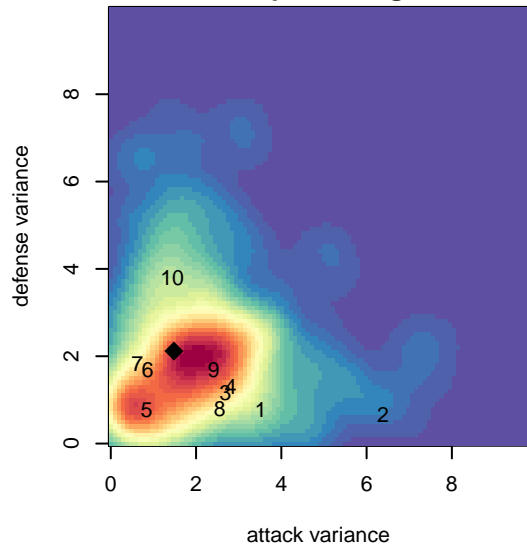
Eastside United FC  
 Gresham, OR  
 B04 total strength=559  
 attack=0.49 defense=0.38  
 fall league = PTT B04 Div 2 White  
 spr league = Spr OYS B04 Div 2 Green  
 notes= Stoke City

alt names used:  
 ET White B04  
 Eastside Timbers 04B White  
 Eastside Timbers 04B White  
 Eastside Timbers 04B White

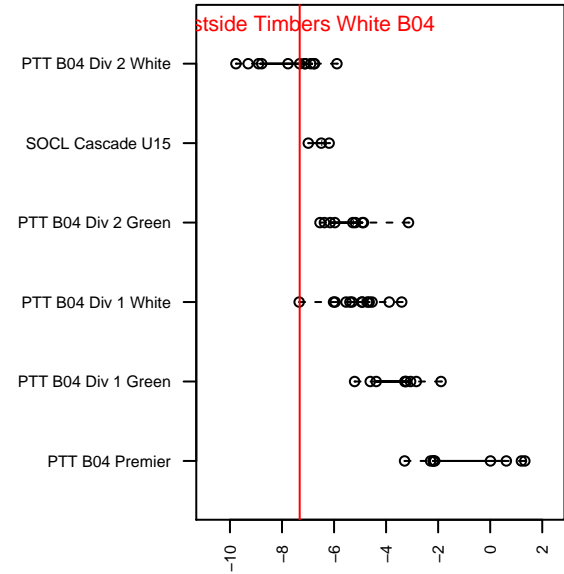
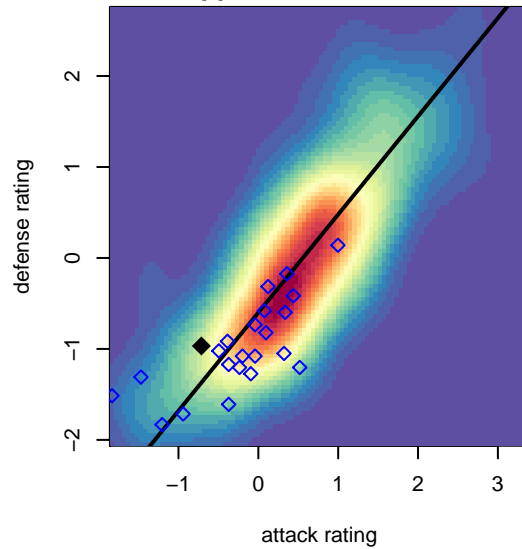
Venues played:  
 2016 Mt Hood Challenge U13 Bronze  
 2016 PTT B04 Division 2 White  
 2016 OYS Founders Cup B04  
 2016 Spr OYS B04 Division 2 Green



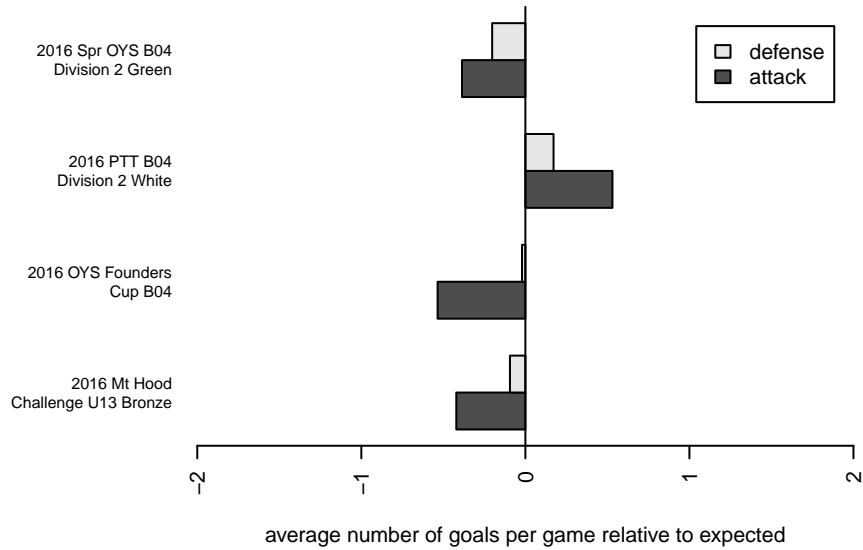
**attack and defense variance (black dot)  
relative to other teams  
and top 10 in region**



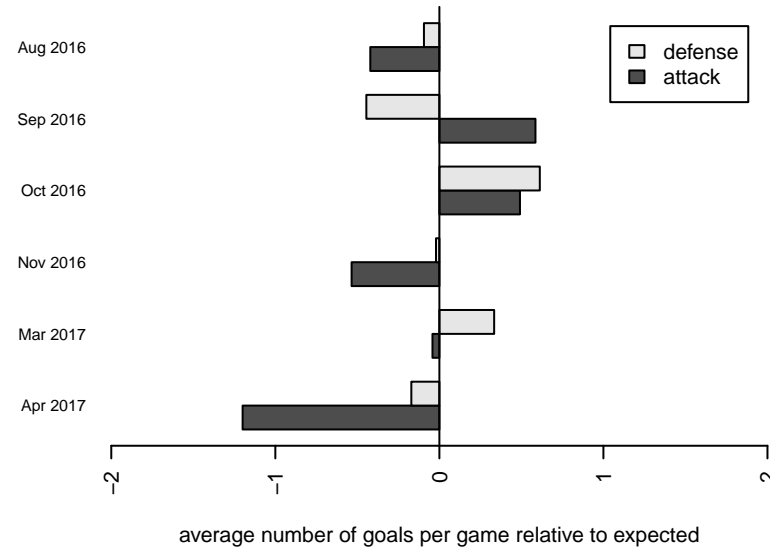
**attack and defense rating  
relative to others at age  
and all opponents in last 13 months**



**Performance relative to 13 month average**



**Performance relative to 13 month average**



| <b>date</b> | <b>home</b>                    |   | <b>away</b>                   |   | <b>venue</b>                      | <b>pred.home</b> | <b>pred.away</b> |
|-------------|--------------------------------|---|-------------------------------|---|-----------------------------------|------------------|------------------|
| 2017-04-30  | Eastside Timbers White B04     | 0 | PCU Black 2 B04               | 4 | 2016 Spr OYS B04 Division 2 Green | 1.51             | 1.90             |
| 2017-04-22  | Pacific FC Dynamo B04          | 2 | Eastside Timbers White B04    | 0 | 2016 Spr OYS B04 Division 2 Green | 2.76             | 1.18             |
| 2017-04-08  | FC Portland White B04          | 3 | Eastside Timbers White B04    | 0 | 2016 Spr OYS B04 Division 2 Green | 3.82             | 0.91             |
| 2017-03-18  | Eastside Timbers White B04     | 1 | GPS Newberg B04               | 1 | 2016 Spr OYS B04 Division 2 Green | 1.44             | 1.93             |
| 2017-03-12  | Eastside Timbers White B04     | 1 | THUSC Chromium Green B04      | 3 | 2016 Spr OYS B04 Division 2 Green | 1.12             | 3.32             |
| 2017-03-11  | Washington Timbers White 2 B04 | 4 | Eastside Timbers White B04    | 1 | 2016 Spr OYS B04 Division 2 Green | 3.75             | 0.57             |
| 2017-02-26  | Eastside Timbers White B04     | 1 | Westside Timbers Copa TS B04  | 5 | 2016 Spr OYS B04 Division 2 Green | 0.98             | 2.98             |
| 2017-02-25  | Thelo Warriors B04             | 3 | Eastside Timbers White B04    | 2 | 2016 Spr OYS B04 Division 2 Green | 2.91             | 1.39             |
| 2016-11-12  | Eastside Timbers White B04     | 1 | Academia Leon B04             | 5 | 2016 OYS Founders Cup B04         | 1.97             | 2.95             |
| 2016-11-06  | Eastside Timbers White B04     | 1 | WUSC Navy B04                 | 1 | 2016 OYS Founders Cup B04         | 1.66             | 2.00             |
| 2016-11-05  | Westside Timbers Copa TS B04   | 2 | Eastside Timbers White B04    | 1 | 2016 OYS Founders Cup B04         | 2.98             | 0.98             |
| 2016-10-30  | BSC Portland Gold B04          | 0 | Eastside Timbers White B04    | 4 | 2016 PTT B04 Division 2 White     | 2.35             | 2.13             |
| 2016-10-23  | LYS Red Knights B04            | 3 | Eastside Timbers White B04    | 2 | 2016 PTT B04 Division 2 White     | 0.88             | 2.15             |
| 2016-10-16  | Eastside Timbers White B04     | 5 | HSC Olimpo B04                | 2 | 2016 PTT B04 Division 2 White     | 2.84             | 0.54             |
| 2016-10-09  | Oregon Trail SC Strikers B04   | 2 | Eastside Timbers White B04    | 2 | 2016 PTT B04 Division 2 White     | 1.93             | 2.70             |
| 2016-10-08  | Washington Timbers White 2 B04 | 2 | Eastside Timbers White B04    | 1 | 2016 PTT B04 Division 2 White     | 3.75             | 0.57             |
| 2016-10-02  | Eastside Timbers White B04     | 1 | Saints -Unk B04               | 2 | 2016 PTT B04 Division 2 White     | 1.73             | 3.91             |
| 2016-10-01  | Eastside Timbers White B04     | 2 | GPS Newberg B04               | 0 | 2016 PTT B04 Division 2 White     | 1.44             | 1.93             |
| 2016-09-25  | Eastside Timbers White B04     | 0 | Foothills SC Celtic Green B04 | 3 | 2016 PTT B04 Division 2 White     | 1.20             | 2.15             |
| 2016-09-18  | Eastside Timbers White B04     | 4 | THUSC Zirconium B04           | 2 | 2016 PTT B04 Division 2 White     | 3.50             | 0.81             |
| 2016-09-17  | PCU Black 3 B04                | 1 | Eastside Timbers White B04    | 4 | 2016 PTT B04 Division 2 White     | 1.18             | 3.20             |
| 2016-09-11  | Eastside Timbers White B04     | 1 | WUSC Navy B04                 | 4 | 2016 PTT B04 Division 2 White     | 1.66             | 2.00             |
| 2016-09-10  | Southside SC Blanco B04        | 1 | Eastside Timbers White B04    | 5 | 2016 PTT B04 Division 2 White     | 2.63             | 1.50             |
| 2016-08-07  | RVSC Timbers White B04         | 3 | Eastside Timbers White B04    | 2 | 2016 Mt Hood Challenge U13 Bronze | 2.08             | 2.01             |
| 2016-08-06  | Eastside Timbers White B04     | 0 | LOSC Green I B04              | 4 | 2016 Mt Hood Challenge U13 Bronze | 1.13             | 2.57             |
| 2016-08-06  | Academia Leon B04              | 1 | Eastside Timbers White B04    | 0 | 2016 Mt Hood Challenge U13 Bronze | 2.95             | 1.97             |
| 2016-08-05  | PCU Union Red 2 B04            | 6 | Eastside Timbers White B04    | 2 | 2016 Mt Hood Challenge U13 Bronze | 6.02             | 0.57             |